

Office Space Available 10,200 square feet

High Image Corporate Office Space



Nicolson
Porter
& List
Inc.



820 PARKVIEW BOULEVARD LOMBARD, ILLINOIS

- Open floor plan
- Office finished to suit
- 24 hour access & HVAC control
- Terrific window line
- Parking - 4 cars per 1000 square feet
- Modern amenities throughout

Woodlake Corporate Park



Park Amenities

- 35 acre business park
- Campus-like setting
- Award winning landscaping
- Walking path lined with mature trees
- Just minutes to I-355 @ North Ave. or Roosevelt Rd.
- Full-service management provided

Corporate Neighbors

- USA Today / Gannett
- Aspect Software
- Guardian Protection Services
- Kone Elevators
- NGK Sparkplugs (U.S.A.)

PRSRT STD
US POSTAGE
PAID
PARK RIDGE, IL
PERMIT NO 337

Exclusive Leasing Agents:



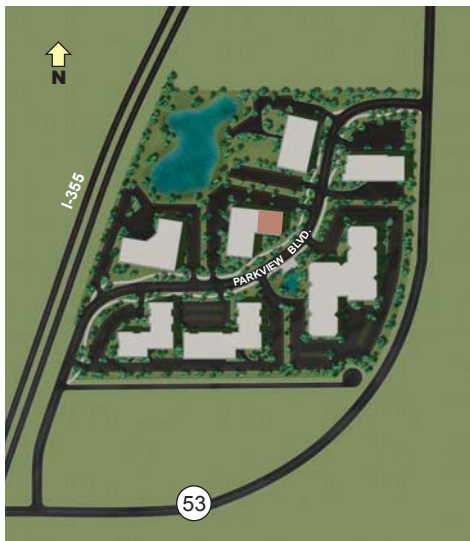
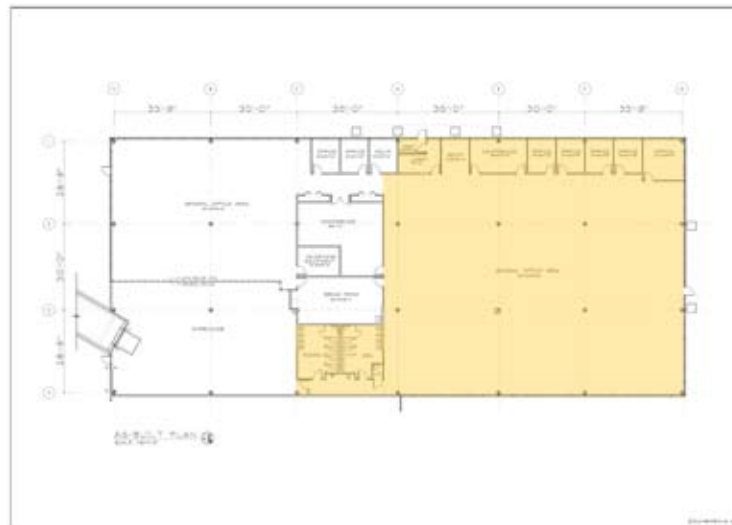
**Nicolson
Porter
& List, Inc.**

Corporate
Real Estate

Contact:

Adam C. Stokes
847-698-7401
astokes@nplchicago.com

Brendan J. Hill
847-698-7409
bhill@nplchicago.com



nicolsonporter&list 

www.nplchicago.com